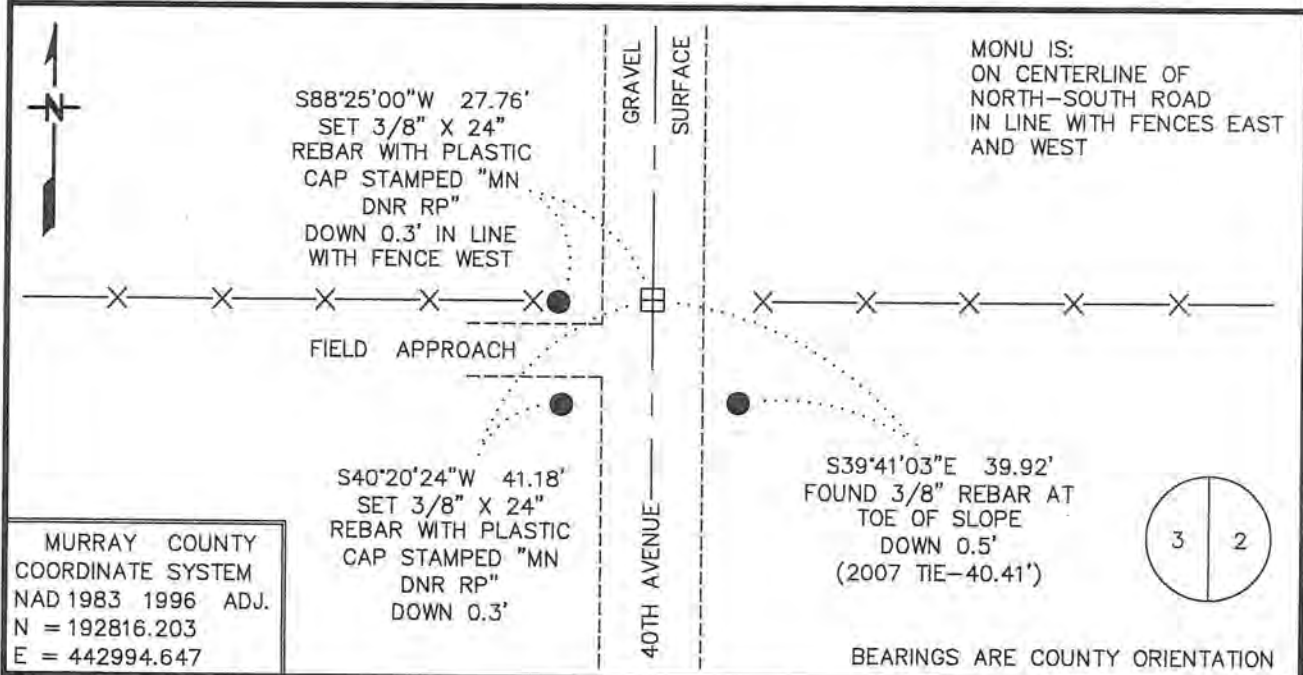


# CERTIFICATE OF LOCATION OF GOVERNMENT CORNER

EAST QUARTER Corner of Section 3, Township 107 N, Range 43 W  
5TH Principal Meridian, State of Minnesota, County of MURRAY

At the corner location shown on the sketch:

- On 11/2/16 found a 8" X 8" 11" STONE, STANDING UPRIGHT, DOWN 0.5'  
DATE
- left monument as found,  lowered monument,  removed monument (explain)
- On 11/2/16 Placed a 3/4" X 24" REBAR WITH PLASTIC CAP STAMPED  
DATE  
"MN DNR LS 17003". DOWN 0.5'. IN PLACE OF FOUND STONE.



Statement of evidence for this corner location is on back of this page.

FEBRUARY 2017  
WMA00754

I hereby certify that this plan, specification, or report was prepared by me or under my direct supervision and that I am a duly Licensed Land Surveyor under the laws of the State of Minnesota.

SIGNATURE Bruce W. Shepherd DATE 10/9/17 License Number 17003  
BRUCE W. SHEPHERD

East Quarter Corner of Section 3, Township 107 North, Range 43 West  
Page 1 of 2

The DNR Division of Lands and Minerals contacted the following for survey information:

Website - [mngeo.state.mn.us](http://mngeo.state.mn.us) for GLO plat and field notes

Website - [murray-countymn.com](http://murray-countymn.com) for section and quarter section corner information

Murray County Recorder's Office

Bueltel-Moseng Land Surveying, Inc. of Marshall

Westwood Multi-Disciplined Surveying & Engineering of Eden Prairie

- 1866 U.S. General Land Office notes, obtained from [mngeo.state.mn.us](http://mngeo.state.mn.us), show the corner marked with a post, in a mound.
- 1908 Plat Book for Cameron Township, obtained from the County Recorder's Office, shows a north-south road and property divisions east and west in the area of the corner.
- 1926 Plat Book for Cameron Township, obtained from the County Recorder's Office, shows property divisions east, west and south in the area of the corner.
- No A Surveyor's Record Book that shows Section 2, T107N, R43W, obtained from  
Date [murray-countymn.com](http://murray-countymn.com), shows a stone at the corner but does not indicate if it was found or set. The following ties are shown to the corner:  
RP tack in brace post, northeast 33.5 feet  
RP tack in brace fence post, northwest, 33.5 feet
- 1968 March, the DNR conducted a survey in Section 3 and the field notes state the following about this corner:  
Stone in place, 0.2 of a foot below grade  
The following ties are shown to corner:  
corner fence post, northeast, 33.5 feet  
corner fence post, northwest, 33.5 feet  
2631.64 feet from the southeast corner of Section 3
- 2007 July 24, A Certificate of Location of Government Corner, obtained from the County Recorder's Office, which is also on Website [murray-countymn.com](http://murray-countymn.com), signed by Christopher Moehrl, PE & LS No 40853, shows that a ½ inch rebar was found down 0.3 of a foot at the corner. The following ties are shown to the corner:  
on the center line of a north-south road  
in line with fences east and west  
set PK nail on southwest side of old wood post, up 3.0 feet, east, 33.84 feet  
set 3/8 inch rebar, down 0.5 of a foot, southeast, 40.41 feet  
set PK nail on east side of wood post, up 3.0 feet, west, 33.29 feet

East Quarter Corner of Section 3, Township 107 North, Range 43 West  
Page 2 of 2

2016 November 2, the DNR Division of Lands and Minerals found a  $\frac{1}{2}$  inch diameter rebar, down 0.3 of a foot, at the corner. Then a hole was dug with a backhoe the center being the found rebar and an 8 inch by 8 inch by 11 inch stone was found standing in an upright position down 0.5 of a foot. The stone was found to be:

2643.15 feet (2640.00 feet – GLO from the southeast corner of Section 3  
2612.32 feet (2610.96 feet – GLO) from the northeast corner of Section 3  
0.73 of a foot east of the found rebar  
0.88 of a foot north and 0.24 of a foot east of the lost position  
on the center line of a north-south road  
in line with a fence east  
in line with a fence west

Analysis of the above information led the DNR Division of Lands and Minerals to conclude that the found an 8 inch by 8 inch by 11 inch stone marks the location of the corner.

The found rebar and found stone were discarded and a  $\frac{3}{4}$  inch by 24 inch rebar with a plastic cap stamped “MN DNR LS 17003” was set in place of the found stone as shown on the sketch of reference ties.

Searched for and found all three 2007 record ties but only measured to one as shown on the sketch of reference ties – the other two ties are wood posts which are unstable.